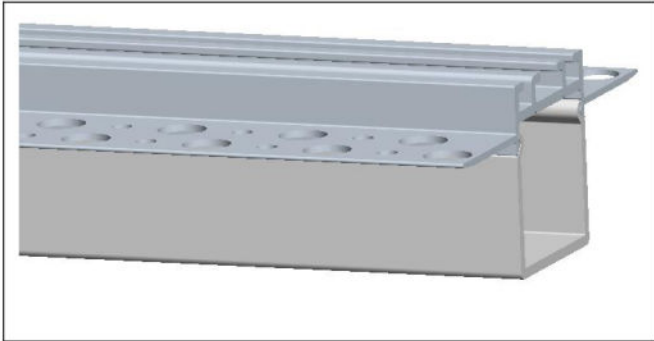
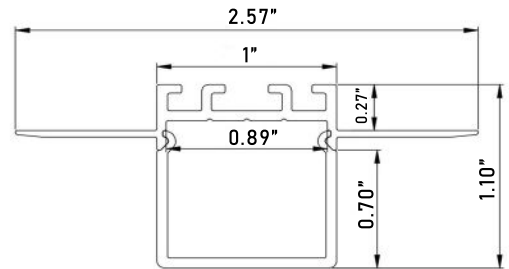


Model : ALP110-S



### Dimension



### Specification

|                     |                   |
|---------------------|-------------------|
| Aluminum Profile    | 6065-T5           |
| Diffuser            | PC diffused cover |
| Length              | 6.4ft.            |
| Weight              | 1.00lbs           |
| Max LED Strip Width | 0.78in.           |
| Beam angle          | 130°              |
| Finish              | Silver anodized   |
| Installation        | Trimless recessed |

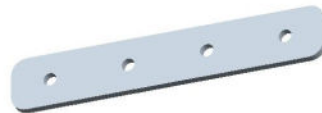
### Accessories



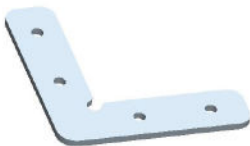
End Cap With Hole(ABS)



End Cap Without Hole(ABS)



180° Connector(Metal)



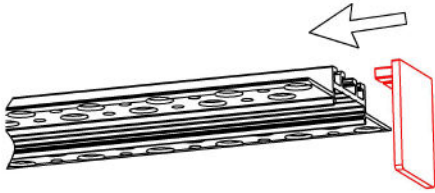
90° Connector(Metal)



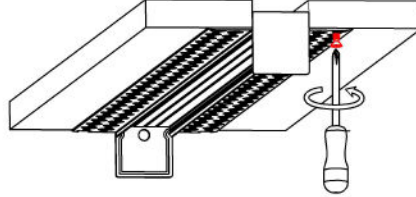
90° Vertical Connector(Metal)

## Steps of Installation

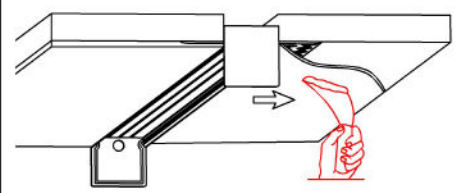
1. Click the end caps



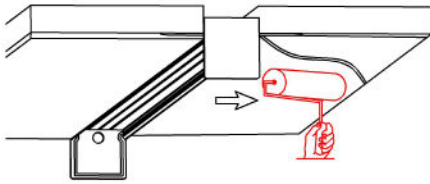
2. Mounting the profile to the drywall



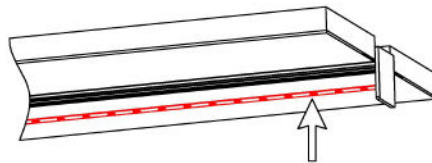
3. Plaster on the fixture & drywall



4. Painting on the fixture & drywall



5. Stick the LED strip



6. Click the diffused cover



7. Installation completed

