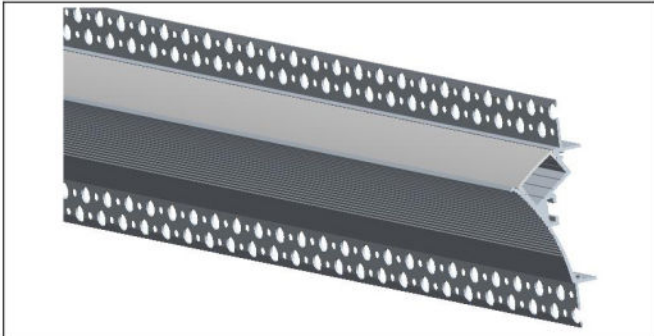
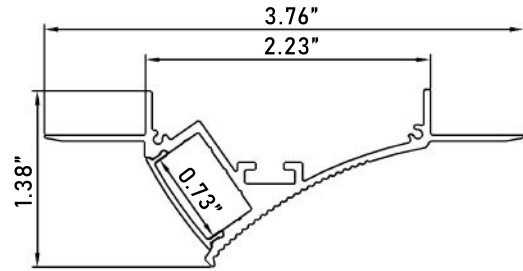


Model : ALP128



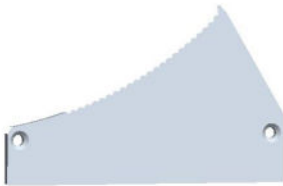
Dimension



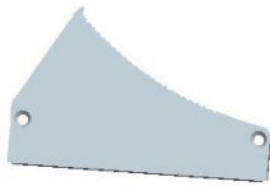
Specification

Aluminum Profile	6065-T5
Diffuser	PC diffused cover
Length	6.4ft.
Weight	1.73lbs
Max LED Strip Width	0.59in.
Beam angle	100°
Finish	Silver anodized
Installation	Trimless recessed

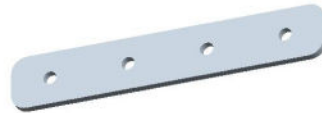
Accessories



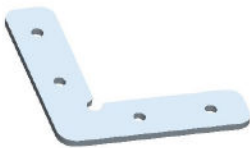
End Cap A(Aluminum)



End Cap B(Aluminum)



180° Connector(Metal)



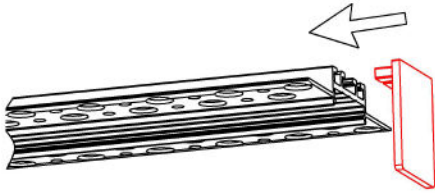
90° Connector(Metal)



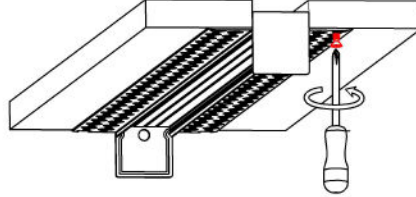
90° Vertical Connector(Metal)

Steps of Installation

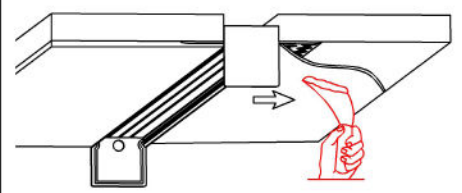
1. Click the end caps



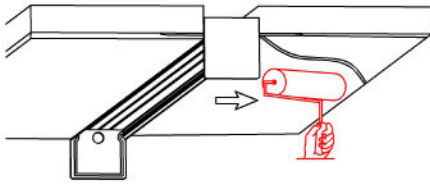
2. Mounting the profile to the drywall



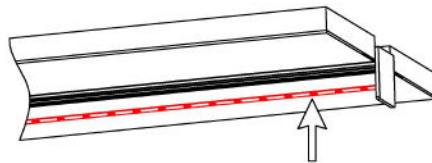
3. Plaster on the fixture & drywall



4. Painting on the fixture & drywall



5. Stick the LED strip



6. Click the diffused cover



7. Installation completed

