

## RGB+CCT MUSIC LED CONTROLLER INSTALL GUIDE



### 1. Features

This product uses WiFi + Bluetooth + 2.4G wireless transmission technology, low power consumption, strong anti-interference ability.

WiFi + Bluetooth connect network can greatly enhance the connect network experience. When the router is disconnected, Bluetooth can also directly connect and control equipment at close range. After successful network configuration using **[MiBoxer Smart]** app to achieve wireless dimming, remote control, group control, scene control, timing control, music movement, biorhythm, sleep plan, wake plan, one key execution, automation, etc. functions. And it supports 2.4G remote control.

- |   |  |
|---|--|
| 16 Millions of colors to choose                                       | Remote control<br>Control distance 98.4 ft |
| Color temperature adjustable  | Smartphone app control                     |
| Dim brightness / Saturation   | Support third party voice control          |
| 2.4G RF wireless transmission technology                              | Group contro                               |
| WiFi wireless control support long-range control                      | Biorhythm                                  |
| Auto-transmitting & Synchronization (only for remote control dimming) | Support music rhythm                       |
| Device sharing  | Sleep / wakeup plan                        |
| Tap-to-Run & automation   | Support scene customization                |
| Timing setting / countdown turn on / off LED light                    | Do not disturb mode                        |
| DMX512 controllable (DMX512 LED transmitter is needed)                |  |

## 2. Dynamic mode table selection (only for remote control)

**Select dynamic mode table 1:** The light is powered off for 10 seconds and then powered on. Within 3 seconds, press the " S+ " button 5 times, the blue light blink 3 times slowly, indicating successfully.

**Select dynamic mode table 2:** The light is powered off for 10 seconds and then powered on. Within 3 seconds, press the " S- " button 5 times, and the yellow light blink 3 times slowly, indicating successfully.

### Dynamic mode table 1 (default)

| Number | Dynamic Mode           | Brightness / Saturation / Speed |
|--------|------------------------|---------------------------------|
| 1      | Mardi Gras             | Adjustable                      |
| 2      | Automatic color change |                                 |
| 3      | Sam                    |                                 |
| 4      | Gemstone               |                                 |
| 5      | Twilight               |                                 |
| 6      | American               |                                 |
| 7      | Fat Tuesday            |                                 |
| 8      | Party                  |                                 |
| 9      | Slow Color Splash      |                                 |

### Dynamic mode table 2 (need to switch manually)

| Number | Dynamic Mode                                 | Brightness / Saturation / Speed |
|--------|--|---------------------------------|
| 1      | Colors gradual change                        | Adjustable                      |
| 2      | White light Gradual change                   |                                 |
| 3      | RGB gradual change                           |                                 |
| 4      | Seven colors jump to change                  |                                 |
| 5      | Jump to change randomly                      |                                 |
| 6      | Red light gradual change<br>+Flash 3 times   |                                 |
| 7      | Green light gradual change<br>+Flash 3 times |                                 |
| 8      | Blue light gradual change<br>+Flash 3 times  |                                 |
| 9      | White light gradual change<br>+Flash 3 times |                                 |


### 3. Auto transmitting & Synchronization (only for remote control)

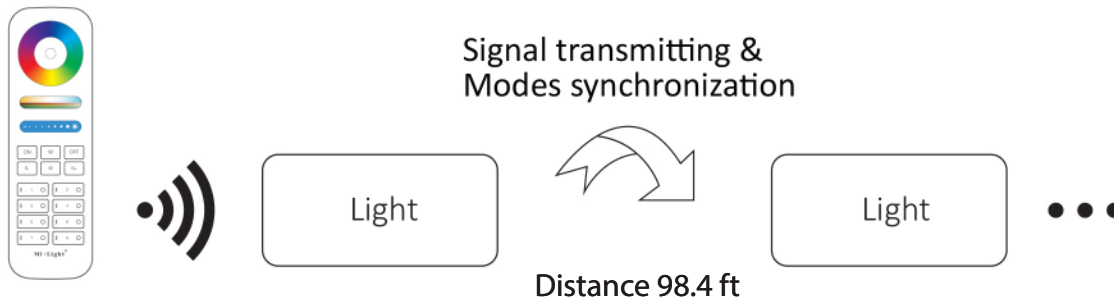
#### 3.1 Signal transmitting

One light can transmit the signals from the remote control to another light within 30m, as long as there is a light within 30m, the remote control distance can be limitless.

#### 3.2 Modes synchronization

Different lights can work synchronously when they are started at different times, light by the same remote, under same dynamic mode and within 98.4 ft distance.


 The same dynamic mode, the same speed can be synchronized.



## 4. Linking Code / Unlinking Code Instructions

### Linking Code Instructions



 Linking failed if light is not blinking slowly, Please follow above steps again.  
(Note: Light that have linked can't link again)

### Unlinking Code Instructions



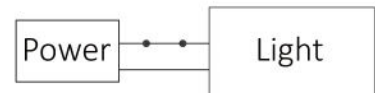
1

Switch off light, after 10 seconds then switch on again.



2

Short press " I " button 5 times within 3 seconds when light on.



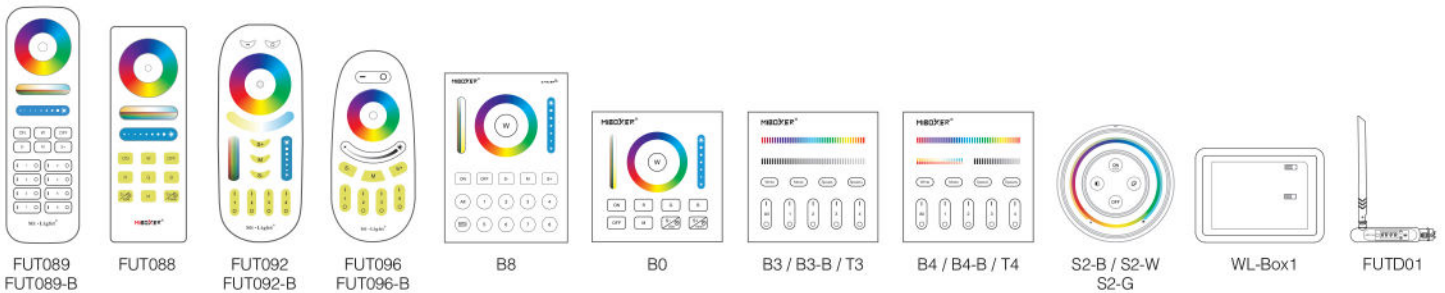
3

Lights blink 10 times quickly means unlinking is done successfully.



Unlinking failed if light is not blinking quickly, Please follow above steps again.  
(Note: Light haven't linked that don't need to unlink)

### Compatible with these remote controls (Purchased separately)



## 5. PWM high frequency / low frequency switching

**Switch to high frequency (6KHz):** on the condition of turning on the light

1. Short press the "OFF" button of the remote control once;
2. Short press the "ON" button 5 times within 3 seconds, the white light blink 2 times quickly, indicating successfully.

**Switch to low frequency (400Hz):** on the condition of turning off the light

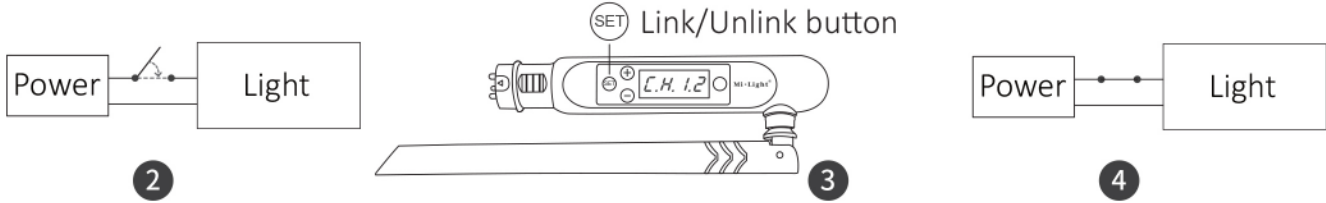
1. Short press the "ON" button of the remote control once;
2. Short press the "OFF" button 5 times within 3 seconds, the white light blink 2 times slowly, indicating successfully.



### 6. DMX512 LED Transmitter Link/Unlink

Compatible with DMX512 LED Transmitter (Purchase separately)

- 1 Choose the zone for the light by pressing “+” or “-” (e.g. “CH12” means zone 12)



#### Link

Switch off the light, after 10 seconds switch on again

When the light is on, short press "SET" 3 times within 3 seconds

The light blink slowly 3 times, means the linking is done successfully

#### Unlink

Switch off the light, after 10 seconds switch on again

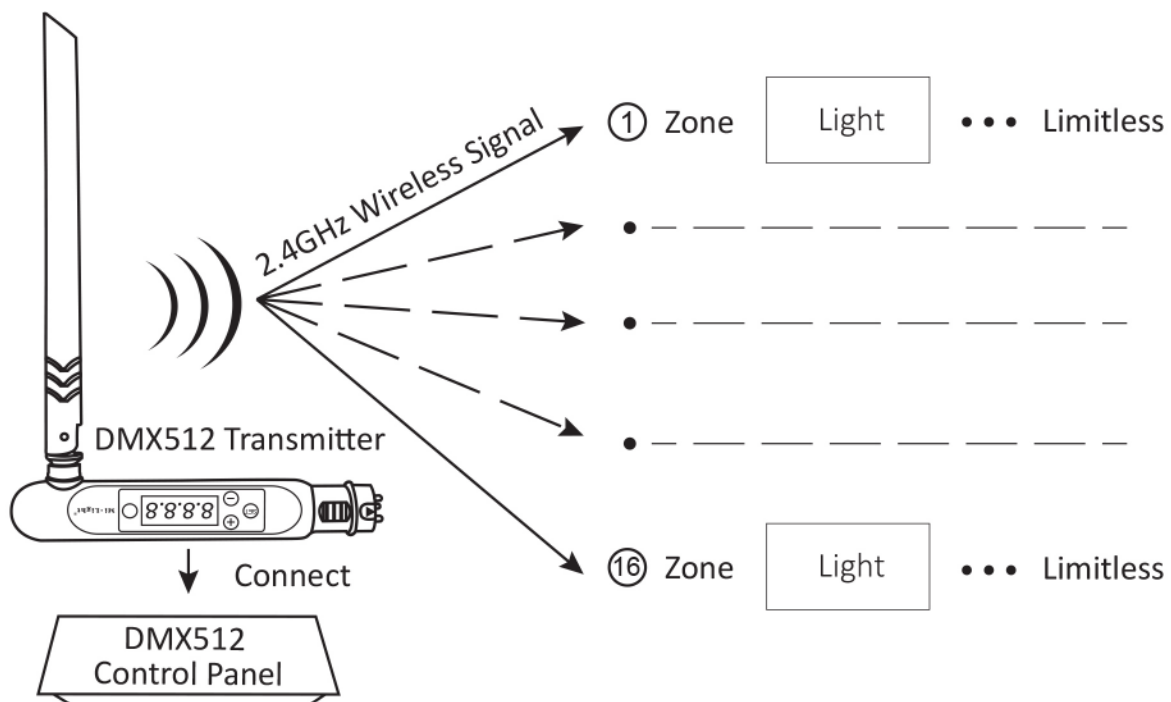
When the light is on, short press "SET" 5 times within 3 seconds

The light blink quickly 10 times, means the unlinking is done successfully



If the link or unlink failed, please follow the above steps again.

### 7. DMX512 LED Transmitter Connection Diagram



### 8. Smartphone app control

#### 1. Download and install [MiBoxer Smart] or [Tuya Smart] app

Search for [MiBoxer Smart] or [Tuya Smart] in Apple or Google store or scan following QR code to download and install the app.

Please click " Register " button to create account while using it in the first time, Log in directly if you already had account.



MiBoxer Smart



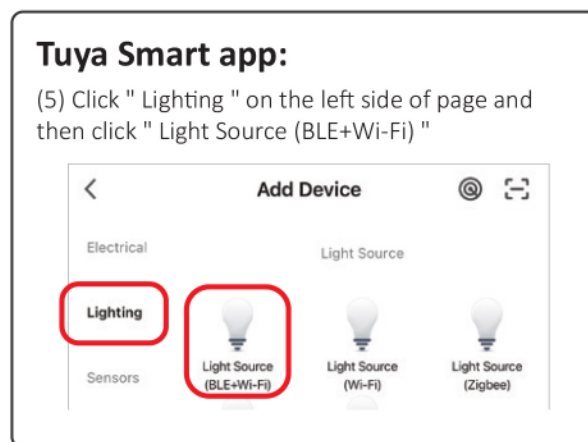
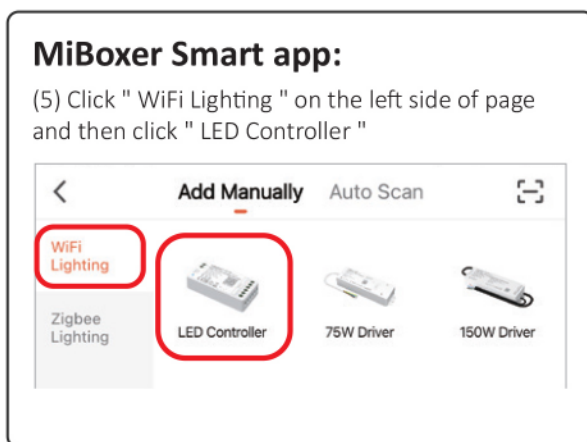
Tuya Smart

#### 2. Network Configuration

- (1) Connect controller with power supply.
- (2) Confirm indicator light is flashing quickly (2 flashes per second),  
If indicator light isn't in fast flashing state, there are two ways to enter:
  - Long press " SET " key until indicator light flashing quickly.
  - Power off and on controller 3 times.
- (3) Connect phone with home WiFi network in the 2.4GHz frequency.



(4) Open homepage of app and click " + " button at the upper right corner of page.



(6) Follow app prompts to complete configuration.

## 9. Scan QR code to watch video instruction



Smartphone app control  
(FUT035W-FUT039W video)



Third party voice control

## 10. Attention

1. Please check whether the voltage of the power supply is in accordance with the light, and please check the connection of both the cathode and anode, otherwise the light will be broken.
2. Please don't connect wires with power on. Please turn on again only when it is in right connection and no short circuit.
3. Non-professional user cannot dismantle the lighting fixtures directly.
4. Please do not use the light in the place with widely range metal area or strong electromagnetic wave nearby, otherwise, the remote distance will be seriously affected.

Made in China

