

6" Round Downlight - Gimbal



Specifications

Product name :	Downlight	LED Q'ty:	40(2835) / 20 (3030)pcs
Model:	DWN-6 (See Page 3)	Lamp holder:	E26/GU10/GU24
driver:	dimmmable isolated driver	Cover type	PC
Power:	16.5W	color:	White
Voltage:	120V 50/60Hz	lumen:	1,000-1,155lm
Product size:	Φ190*88mm	light efficiency:	70LM/W
CRI:	Ra≥90	Package:	198*198*102 mm
C C T:	2700K, 4000K, 5000K	Q'TY:	1*4*3=12 pcs
Source :	2835/3030	N.W.:	498g
Beam angle:	30°	IP Rating:	65
Lifespan:	50,000 Hours	Warranty:	5 Years

Features

- using high quality high power LED as light source, long service life, high luminous efficiency, energy saving effect is good
- using constant current control of switch power supply, to adapt to the wide voltage range
- introduced large heat dissipation structure, good heat dissipation effect
- lamps and lanterns reflectors surface of vacuum steaming aluminum processing, high reflection efficiency

6" Round Downlight - Gimbal

Light Source Test Report

Color Parameters:

Chromaticity Coordinate: $x=0.4622(dx=0.0014)$ $y=0.4134(dy=0.0026)$

Chromaticity Coordinate: $u'=0.2627$ $v'=0.5288(duv=8.41e-04)$

Tc=2689K Dominant WL:Ld=584.0nm Purity=62.8% Centroid WL:610.0nm

Ratio:R=27.9% G=70.3% B=1.8% Peak WL:Lp=625.0nm HWL:150.5nm

Render Index:Ra=91.3

R1 =91 R2 =94 R3 =95 R4 =92 R5 =91 R6 =92 R7 =93

R8 =82 R9 =59 R10=85 R11=93 R12=81 R13=92 R14=96 R15=88

Photo Parameters:

Flux: 1167.6 lm Fe: 4.1728 W Efficacy:63.27 lm/W

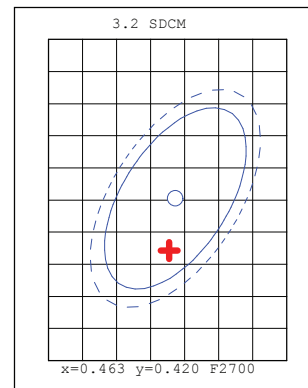
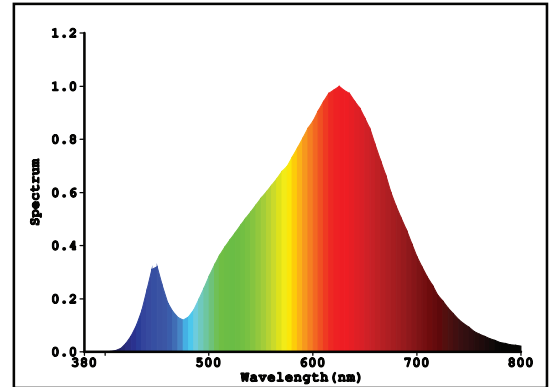
Electrical Parameters:

Luminaire: U=110.2V I=0.1695A P=18.45W PF=0.9873

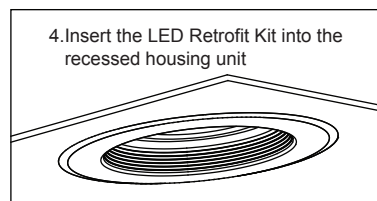
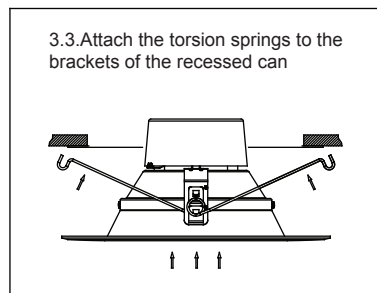
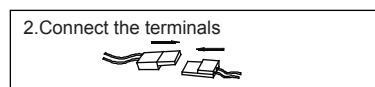
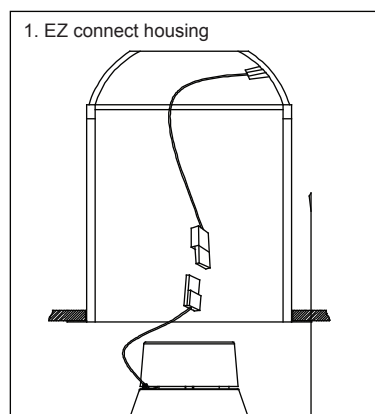
Instrument Status:

Scan Range:380.0nm-800.0nm Interval:5.0nm[0] Ip=29100(G=5,D=57)

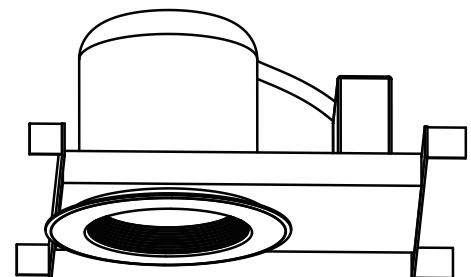
REF=40969(R=3) %=-0.188% PMT: 28.3 centigrade [150.0]



Installation method



Installation effect diagram

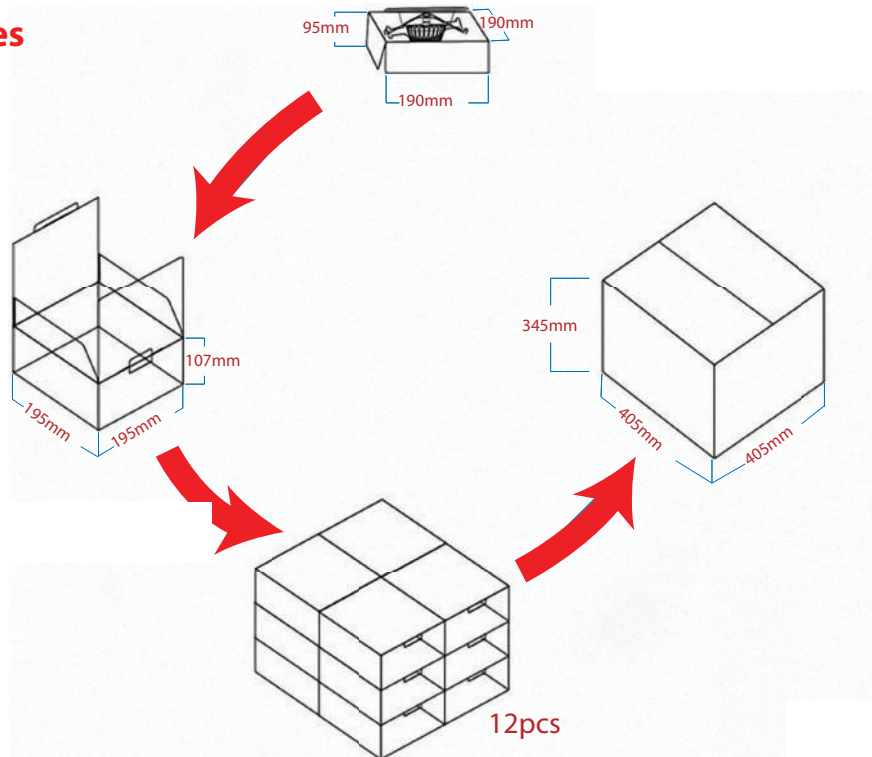


CAUTION:

Use only on 120volt 60Hz circuits. Minimum starting temperature is -20°F . This device is for use with most types of 5" and 6" recessed fixtures. This device may not be compatible with all dimmers. When installing, make sure that power is switched off before installing. Do not look directly into the light. compatible with most dimmers including Lutron 6B38 and Panasonic WN575159. For more information including dimmer compatibility contact us.

6" Round Downlight - Gimbal

Product Features



Product name :	Downlight	QTY:	12pcs
Product model :	See Below	20'GP size:	5898x2352x2393mm
Package size:	198*198*10mm	Packing terms for 20'GP:	14 x 5x 6 (carton)
N.W.:	498g	QTY for 20'GP:	420 (carton)
G.W.:	11.5kg	40'GP size:	12032x2352x2393mm
Carton size:	43*43.5*45cm	Packing terms for 40'GP:	28 x 5 x 6 (carton)
N.W.:	498g	QTY for 40'GP:	840 (carton)
G.W.:	11.5Kg		

Ordering Information

Model + Power + CCT

Example: DWN-R-6-G-16.5W-5000K

Model	Shape	Power	CCT
DWN-R-6-G	Round	16.5W	2,700K
			4,000K
			5,000K